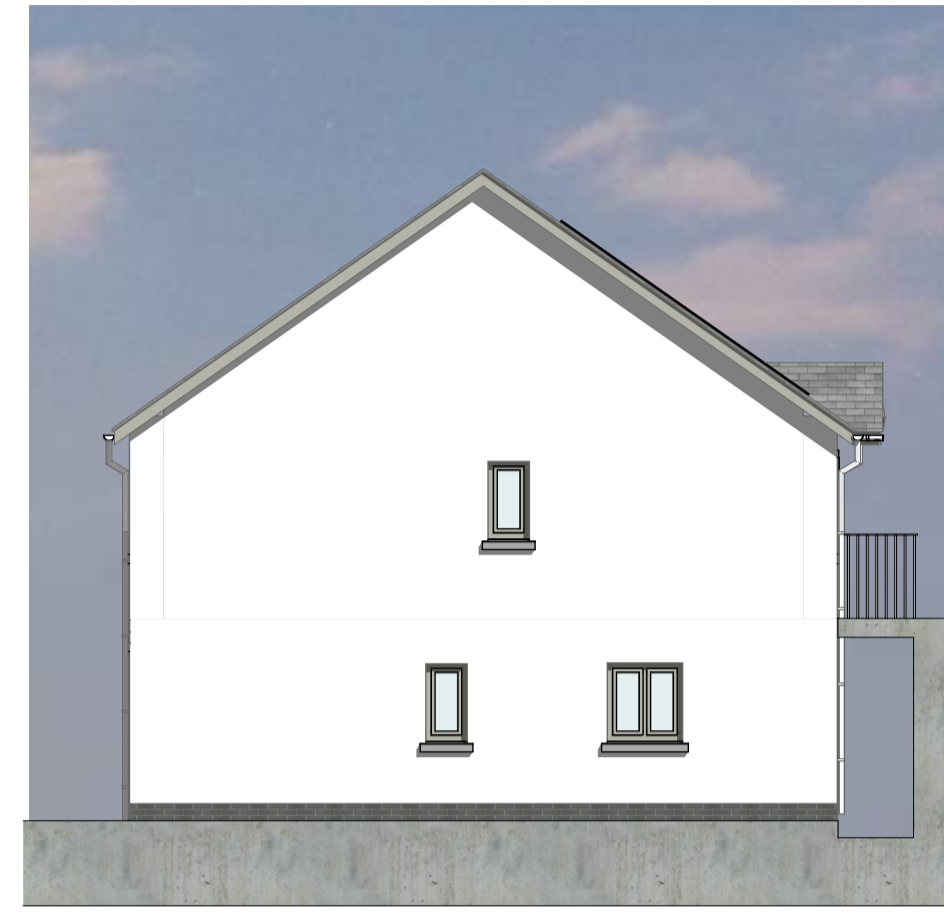
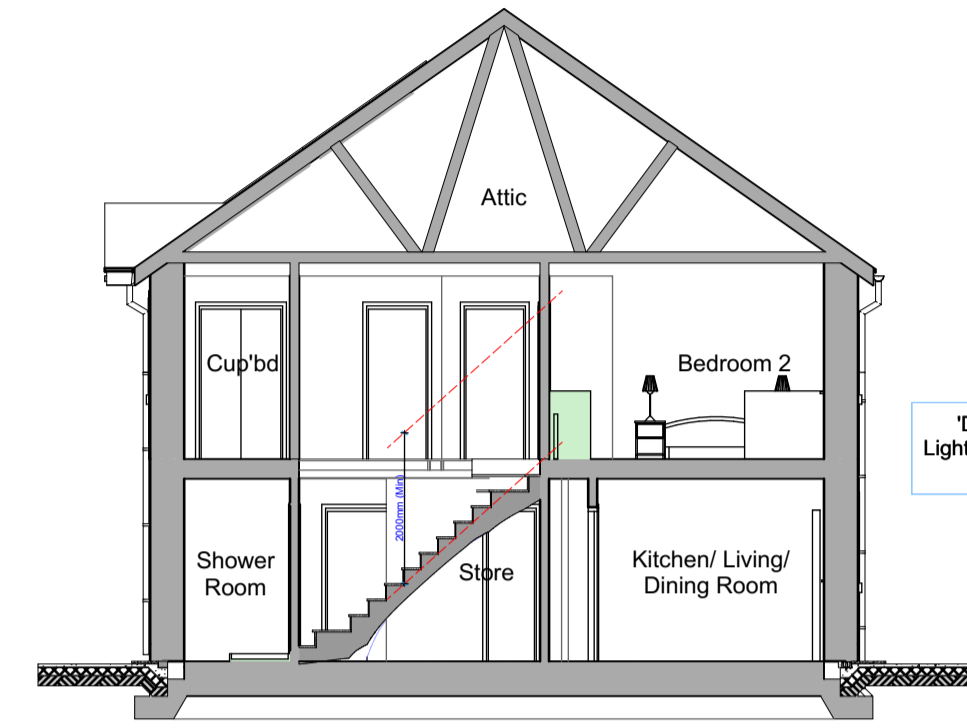




Front Elevation 1:100



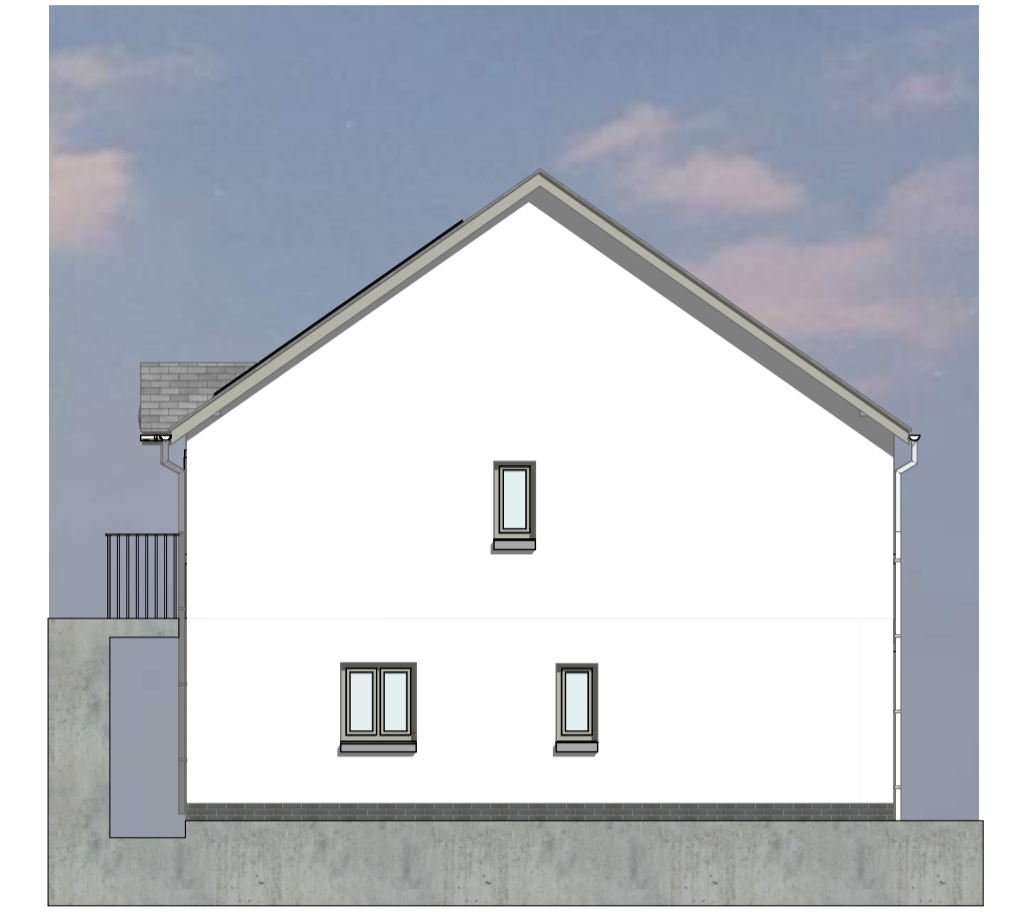
Left-Side Elevation 1:100



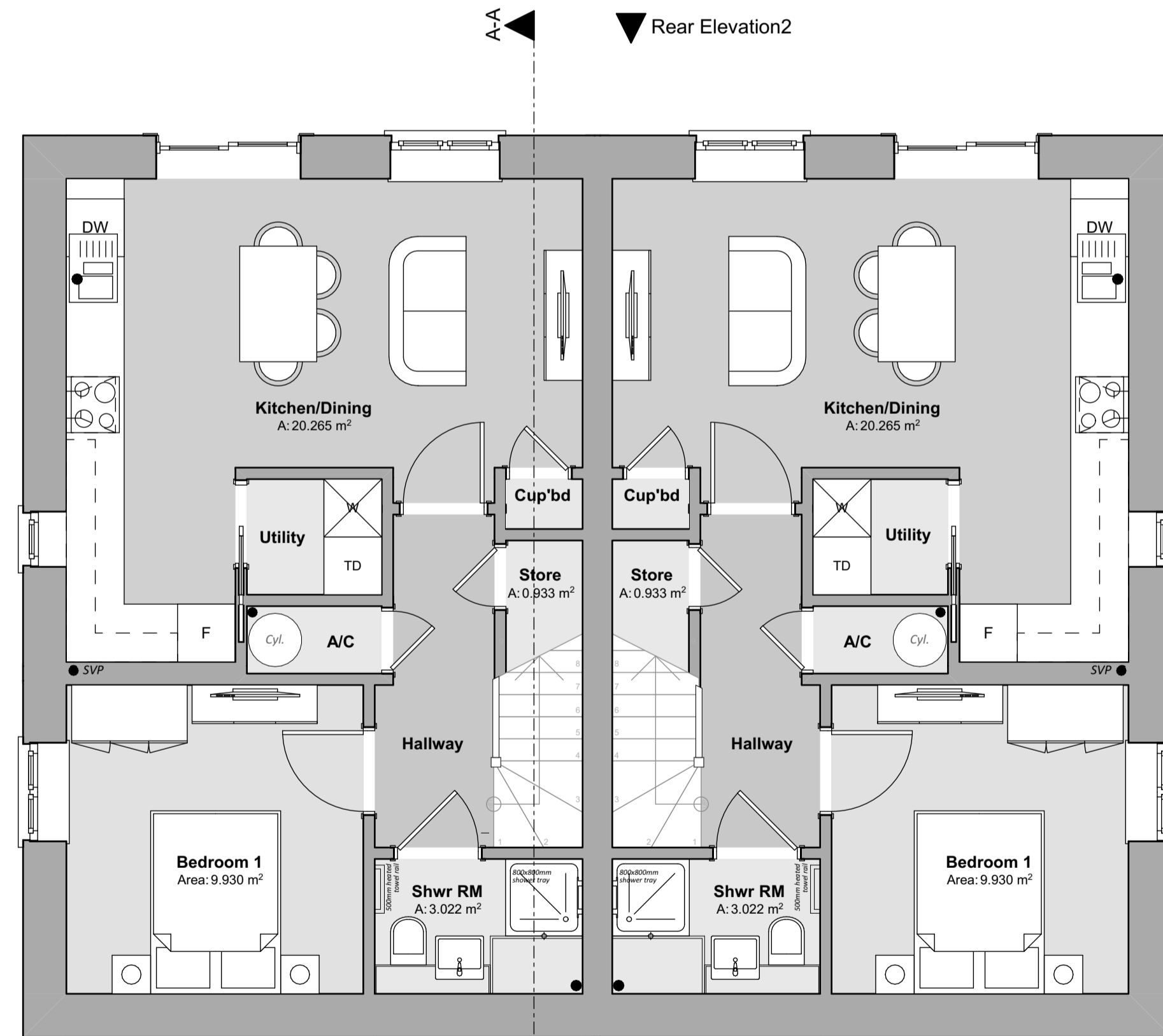
Building Section 1:100



Rear Elevation 1:100

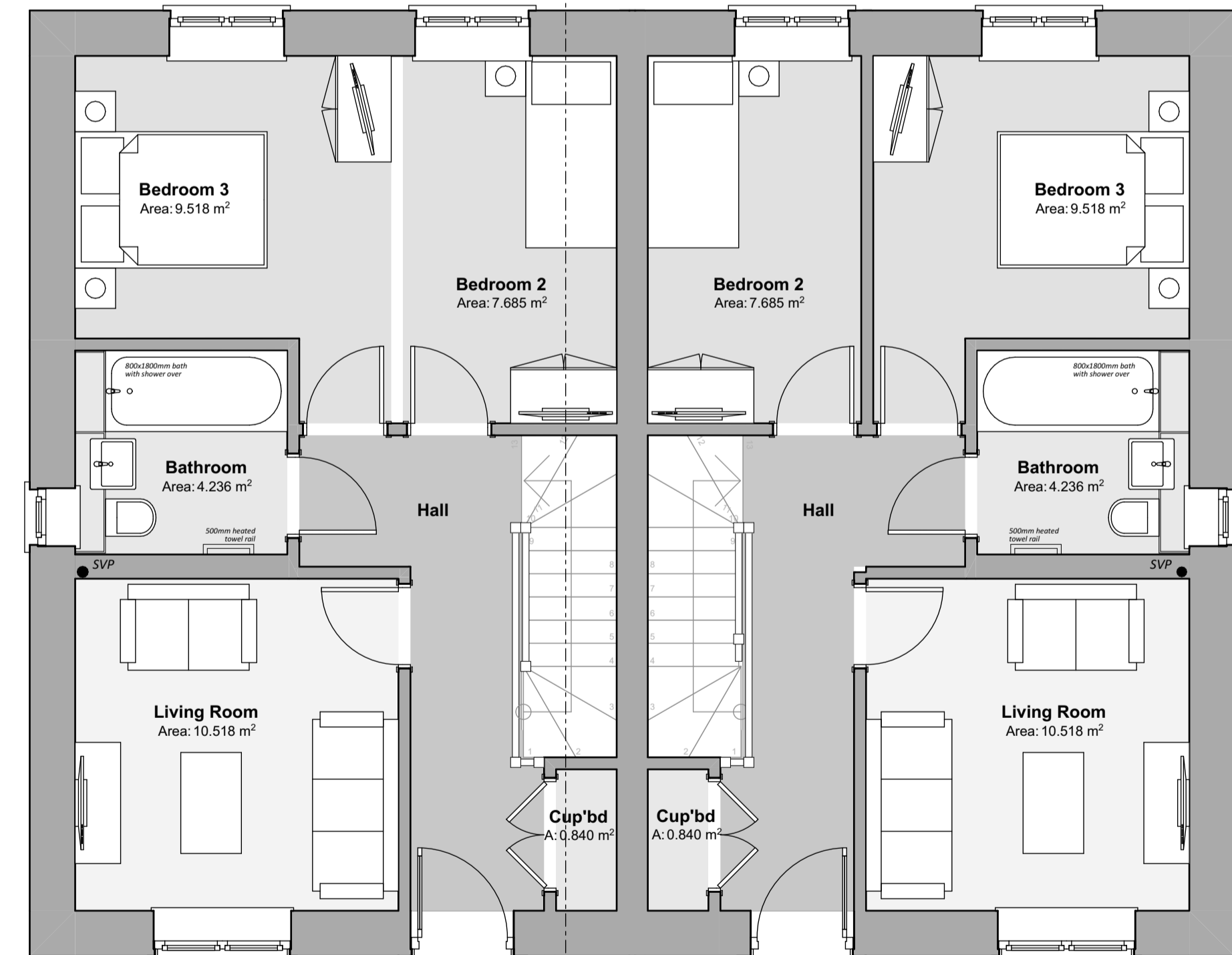


1:100



Lower Ground Floor Plan 1:50

Floor Areas:
 Gross Internal Lower Ground Floor Area = 45.36m² (488.250sqft)
 Gross Internal Ground Floor Area = 45.36m² (488.250sqft)
Total Gross Internal Floor Area = 90.72m² (976.501sqft)



Ground Floor Plan 1:50

Revision:	Date:	By:	Notes:



Client: WAKEFIELD DEVELOPMENTS PEMBROKESHIRE LIMITED
 Scale: Noted
 Date: April '23
 Drawn: RH/SE
 Job Title: Proposed Residential Development, Land East of Pilgrims Way, Roch, Pembrokeshire SA62 6BQ
 Drawing Title: PLANNING DRAWINGS - 3 Bed Semi Det Split-Level House - Floor Plans, Elevations & Section
R534 P-15