



Front Elevation 1:100



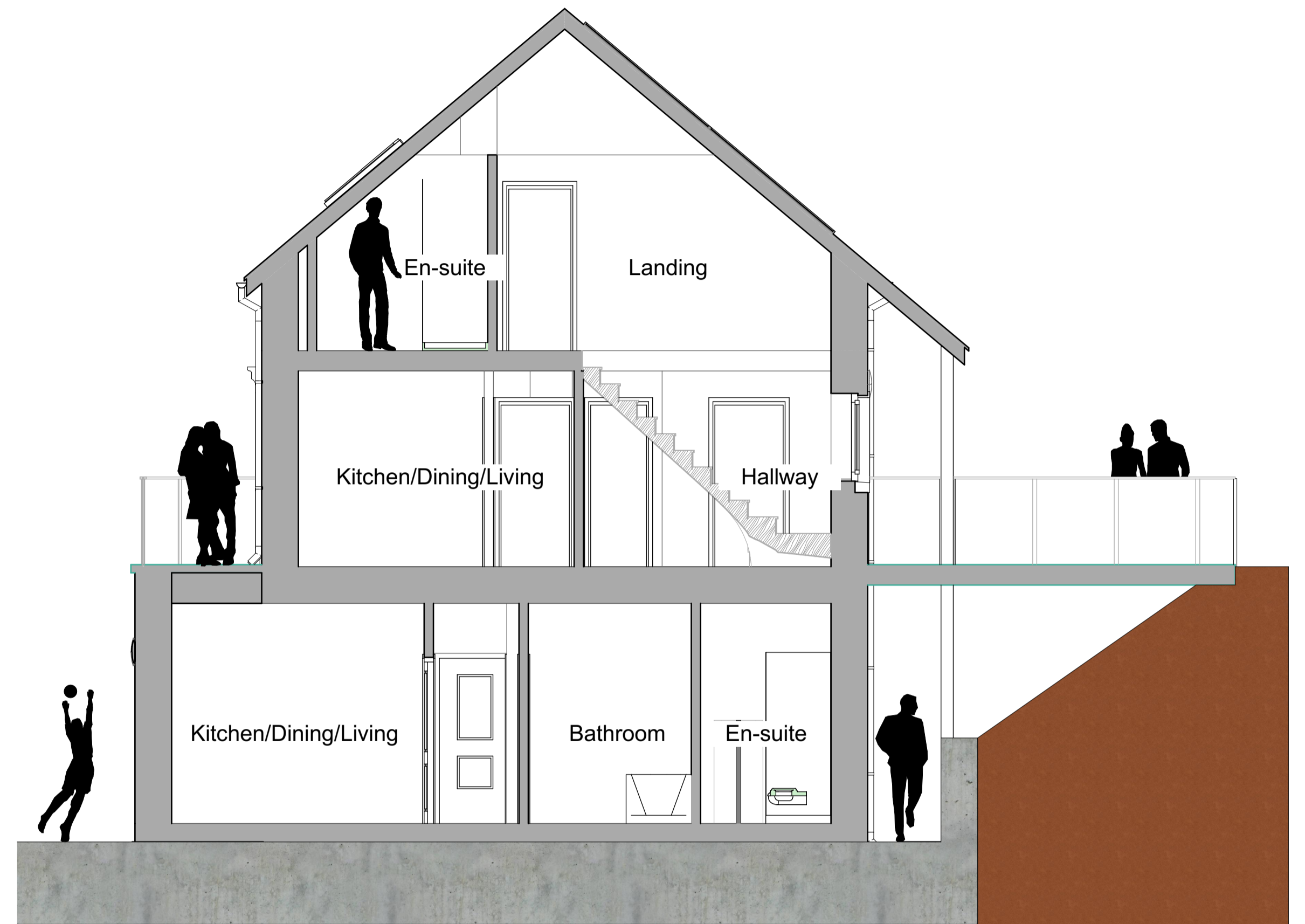
Left-Side Elevation 1:100



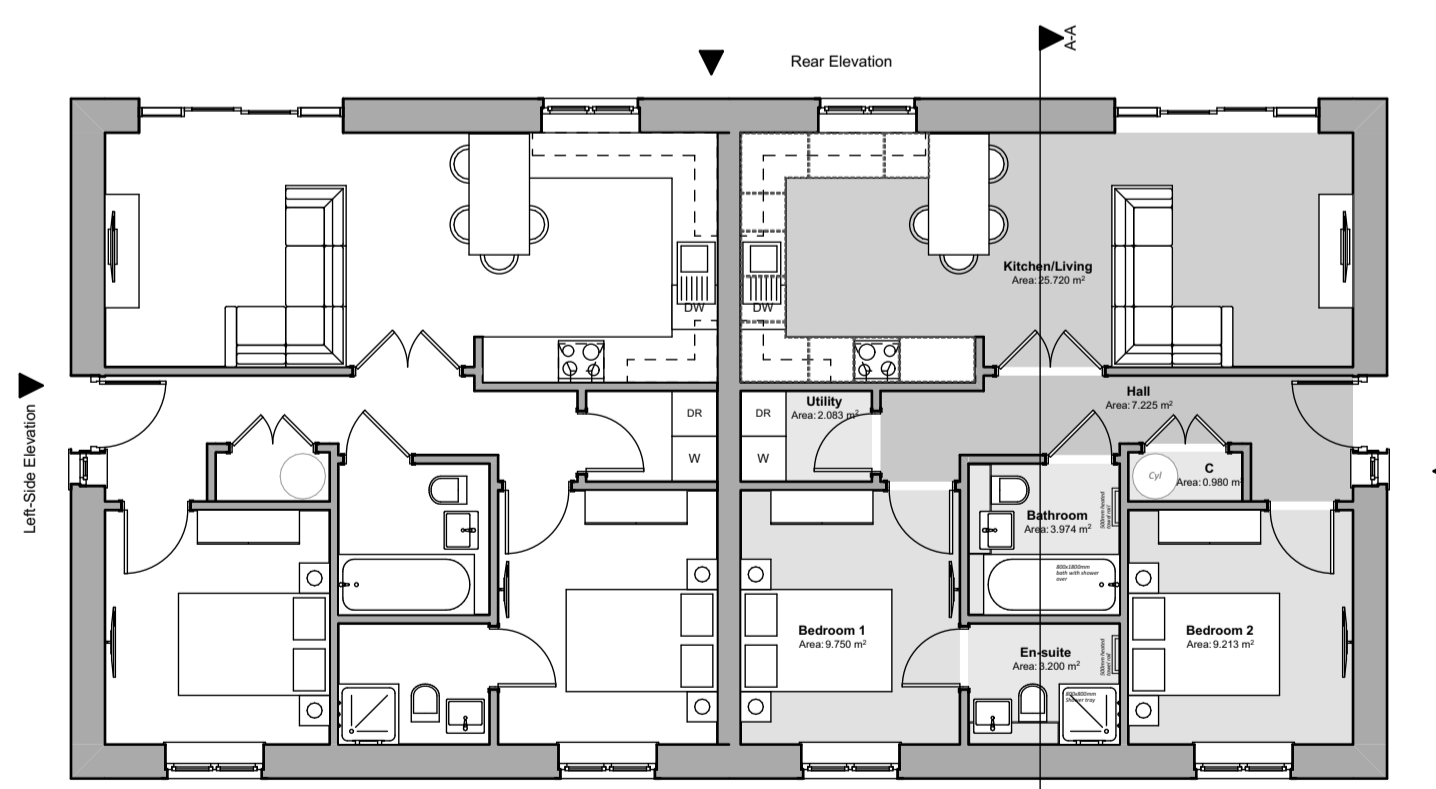
Rear Elevation 1:100



Right-Side Elevation 1:100



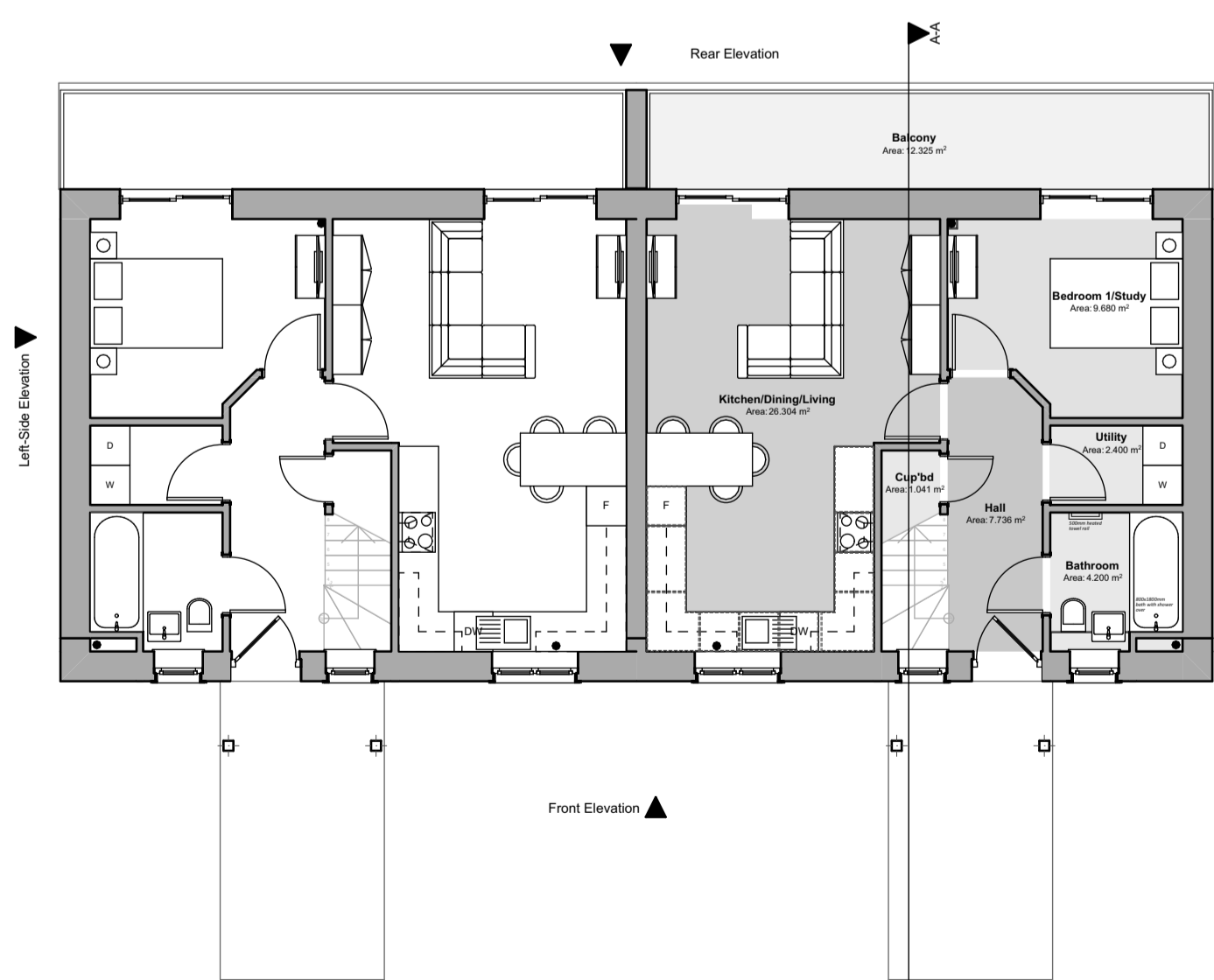
Building Section 1:50



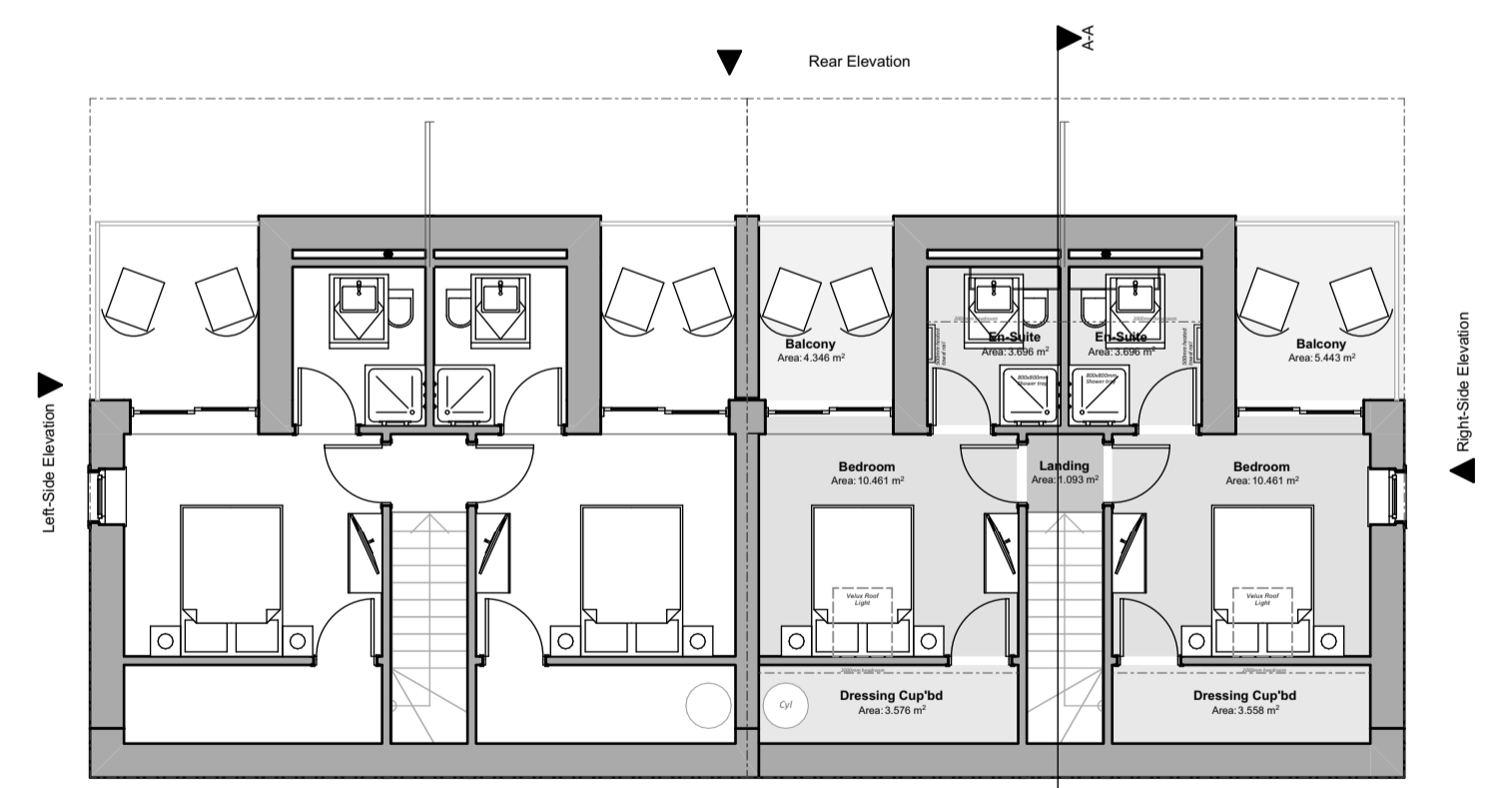
Floor Areas: 1 Bed Apartment

Total Gross Internal Lower Floor Area = 65.50m² (705.036sqft)
Total Gross Internal Area = 65.500m² (705.036sqft)

Lower Ground Floor Plan 1:100



Ground Floor Plan 1:100



Floor Areas: 2 Bed Apartment

Total Gross Internal Ground Floor Area = 52.90m² (569.41sqft)
Total Gross Internal First Floor Area = 42.05m² (452.62sqft) (excluding balcony's)
Total Gross Internal Area = 94.95m² (1022.033sqft)

First Floor Plan 1:100

Revision:	Date:	By:	Notes:



Client: WAKEFIELD DEVELOPMENTS PEMBROKESHIRE LIMITED
Scale: Noted
Date: April '23
Drawn: RH/SE
Job Title: Proposed Residential Development, Land East of Pilgrims Way, Roch, Pembrokeshire SA62 6BQ
Drawing Title: PLANNING DRAWINGS - 2 Bed Semi-Det Apartments - Floor Plans, Elevations & Section
R534 P-12