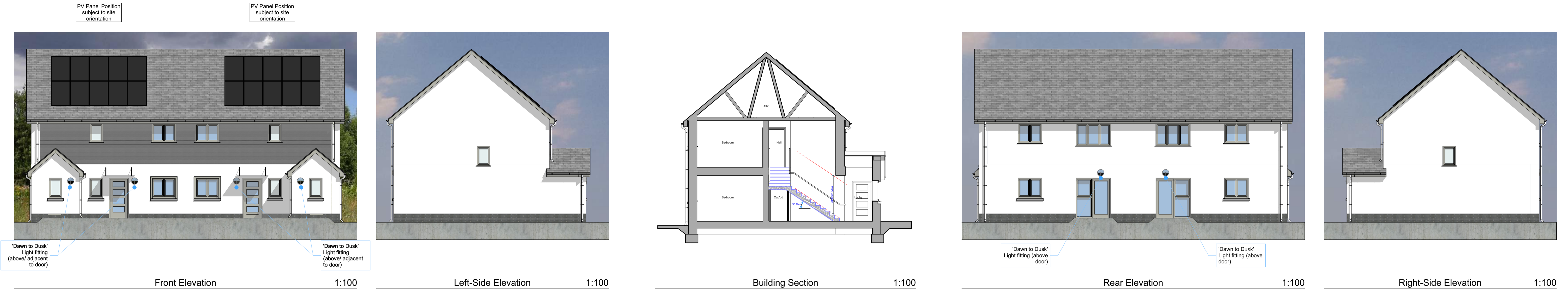
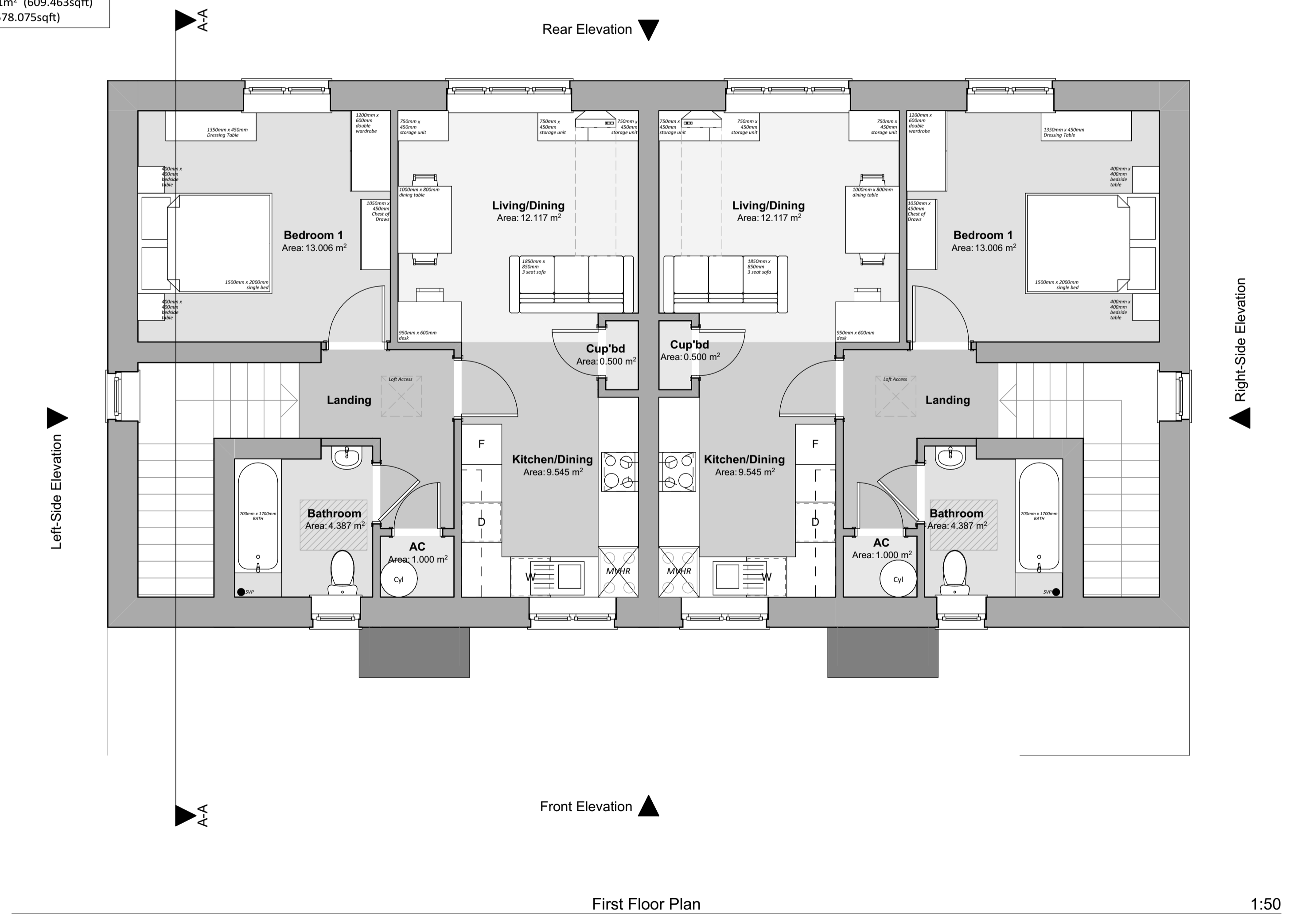
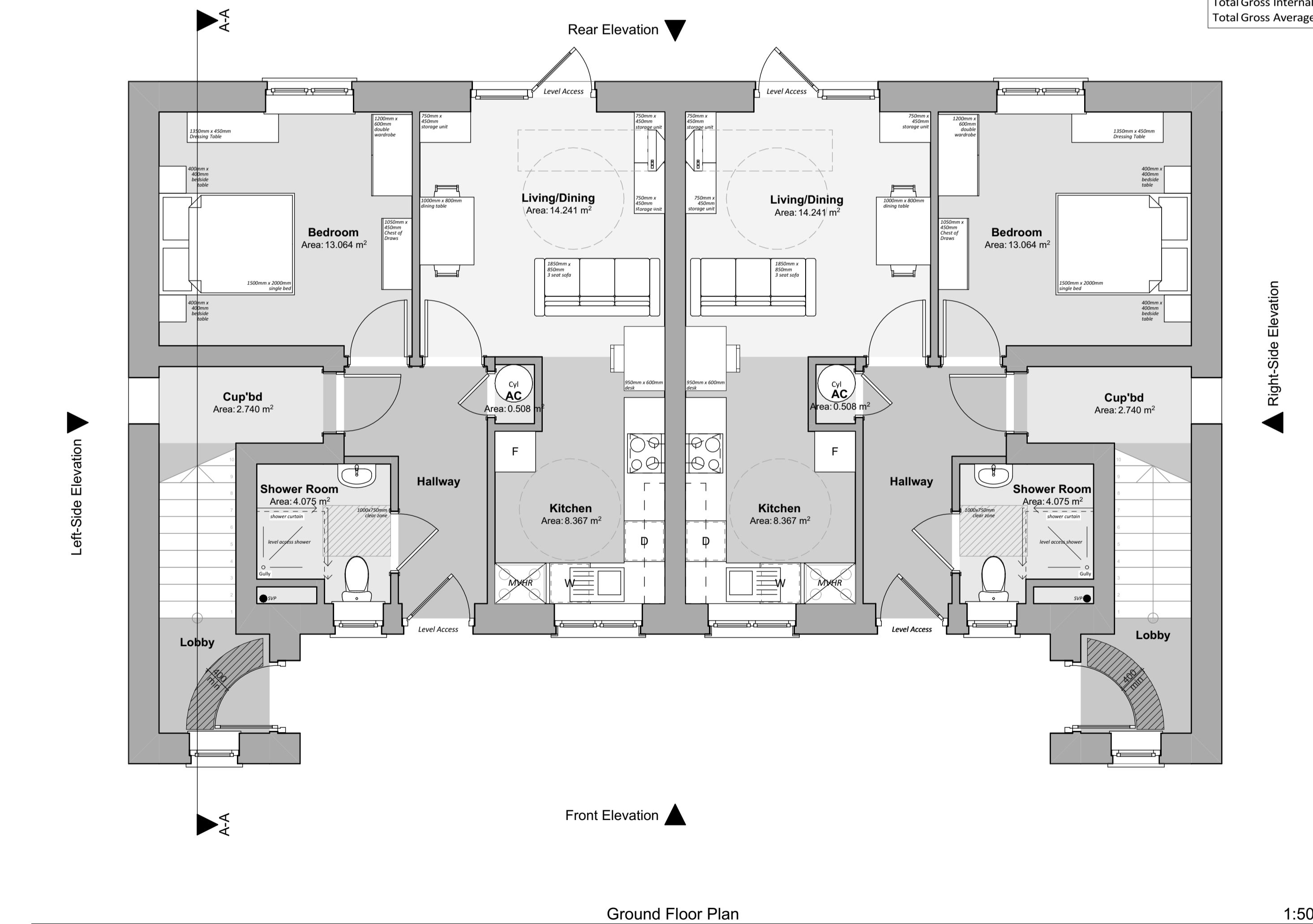


Proposed Residential Development, Land East of Pilgrims Way, Roch, Pembrokeshire SA62 6BQ

"Planning Drawings" - 1 Bed Semi-Detached Apartments



Floor Areas: Plots
 Total Gross Internal Ground Floor Areas = 50.789m² (546.688sqft)
 Total Gross Internal First Floor Areas = 56.621m² (609.463sqft)
 Total Gross Average Floor Area = 53.705m² (578.075sqft)



Revision:	Date:	By:	Notes:

16 Main Street,
 Fishguard,
 Pembrokeshire,
 SA65 9JU
 01348 435004/06
 design@rlharchitectural.com
 www.rlharchitectural.com

Client: WAKEFIELD DEVELOPMENTS PEMBROKESHIRE LIMITED
 Scale: Noted
 Date: April '23
 Drawn: RH

Job Title: Proposed Residential Development, Land East of Pilgrims Way, Roch, Pembrokeshire SA62 6BQ

Drawing Title: PLANNING DRAWINGS - 1 Bed Semi-Detached Apartments - Plans, Elevations & Section
 Drawn: RH

R534 P-10