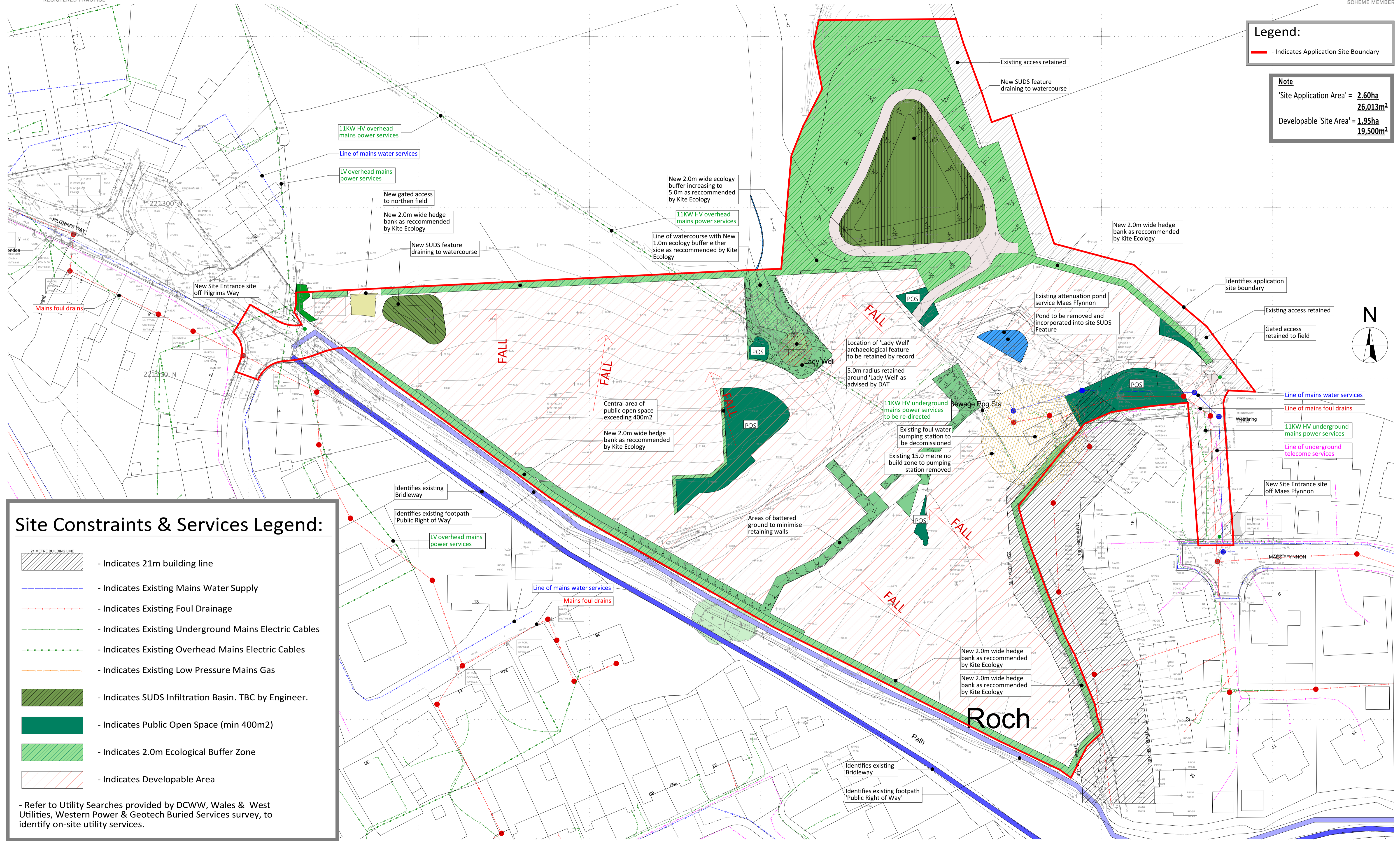


Legend:

— Indicates Application Site Boundary

Note

'Site Application Area' = 2.60ha
26,013m²
Developable 'Site Area' = 1.95ha
19,500m²



Site Constraints & Services Legend:

- Indicates 21m building line
- Indicates Existing Mains Water Supply
- Indicates Existing Foul Drainage
- Indicates Existing Underground Mains Electric Cables
- Indicates Existing Overhead Mains Electric Cables
- Indicates Existing Low Pressure Mains Gas
- Indicates SUDS Infiltration Basin. TBC by Engineer.
- Indicates Public Open Space (min 400m²)
- Indicates 2.0m Ecological Buffer Zone
- Indicates Developable Area

- Refer to Utility Searches provided by DCWW, Wales & West Utilities, Western Power & Geotech Buried Services survey, to identify on-site utility services.

Site Constraints Plan

1:500

Revision:	Date:	By:	Notes:



Client: WAKEFIELD DEVELOPMENTS PEMBROKESHIRE LIMITED
Scale: Noted
Date: April '23
Drawn: SE/RH
Drawing Title: PLANNING DRAWINGS - Development Site Services & Site Constraints Plan
Job Title: Proposed Residential Development, Land East of Pilgrims Way, Roch, Pembrokeshire SA62 6BQ
R534 P-01