



Front Elevation 1:100



Front Elevation 1:100

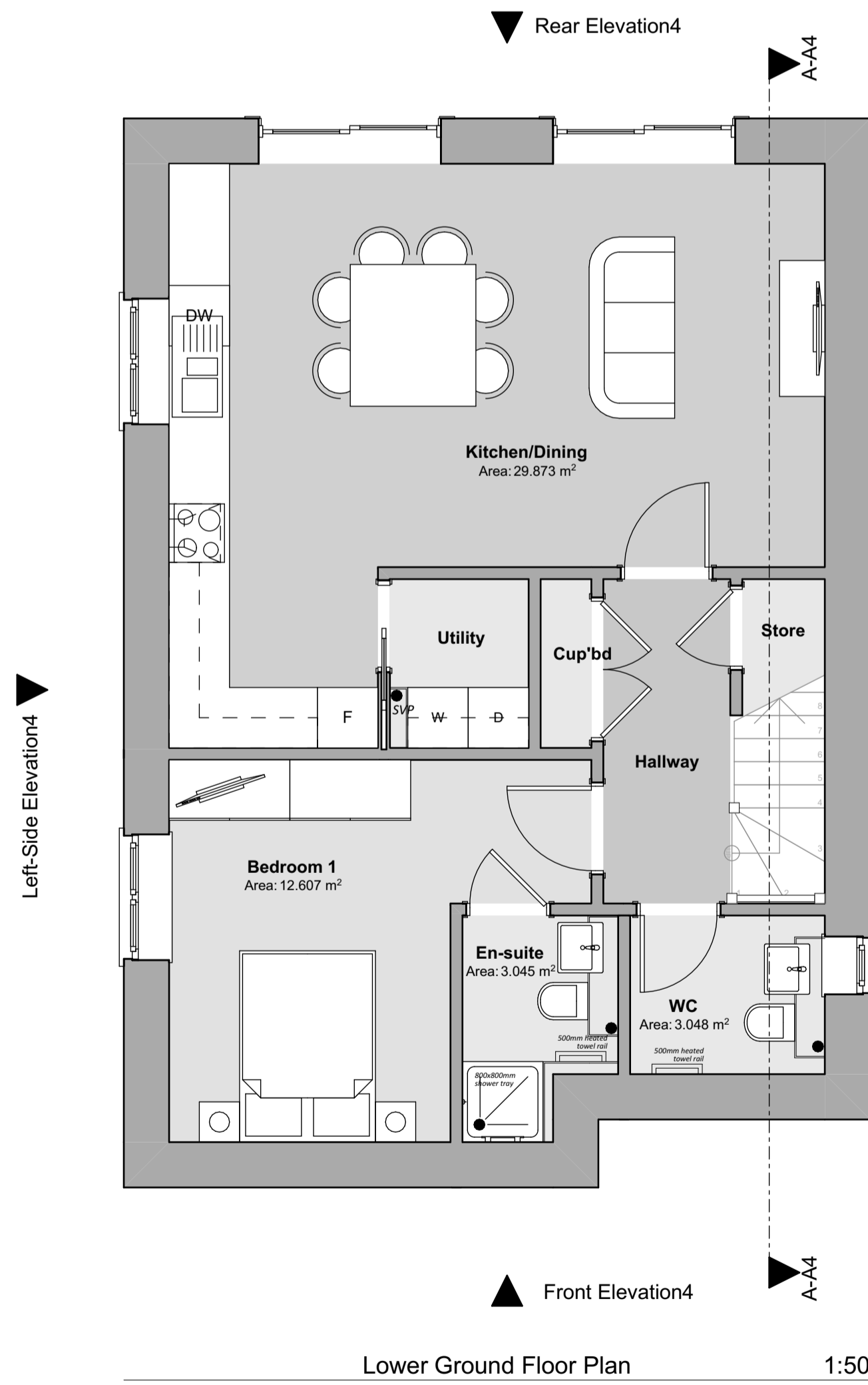
'Dawn to Dusk' Light fitting (above door)



Front Elevation 1:100

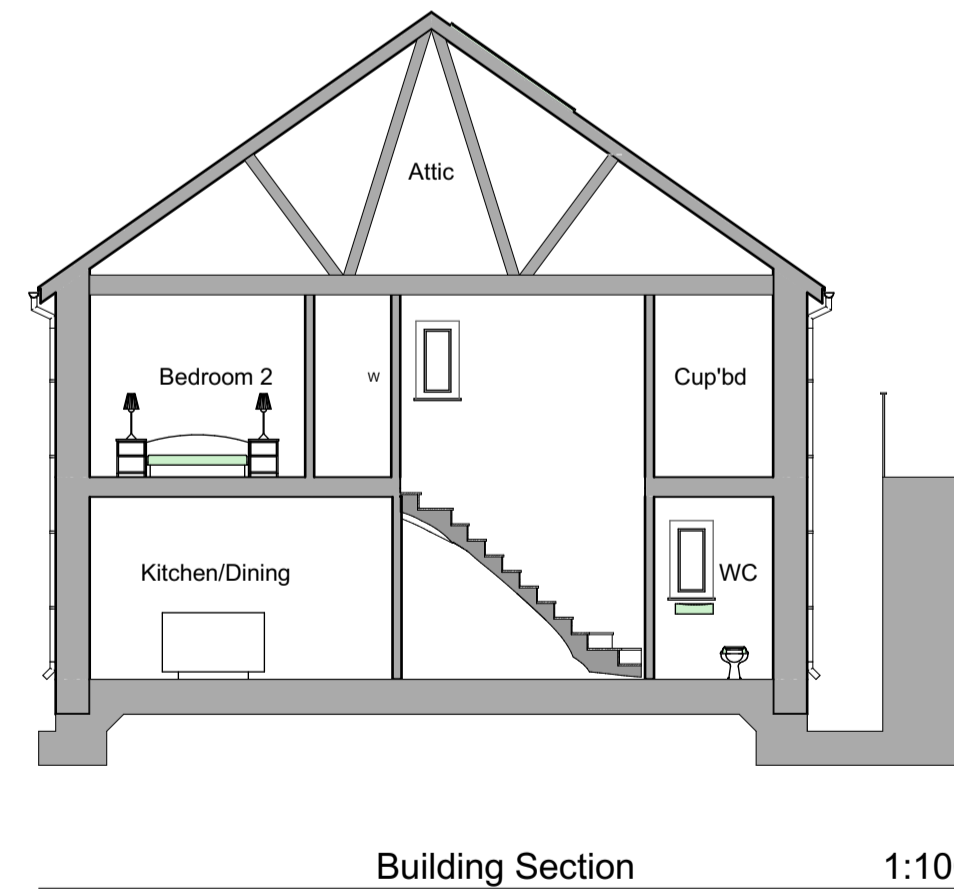


Front Elevation 1:100

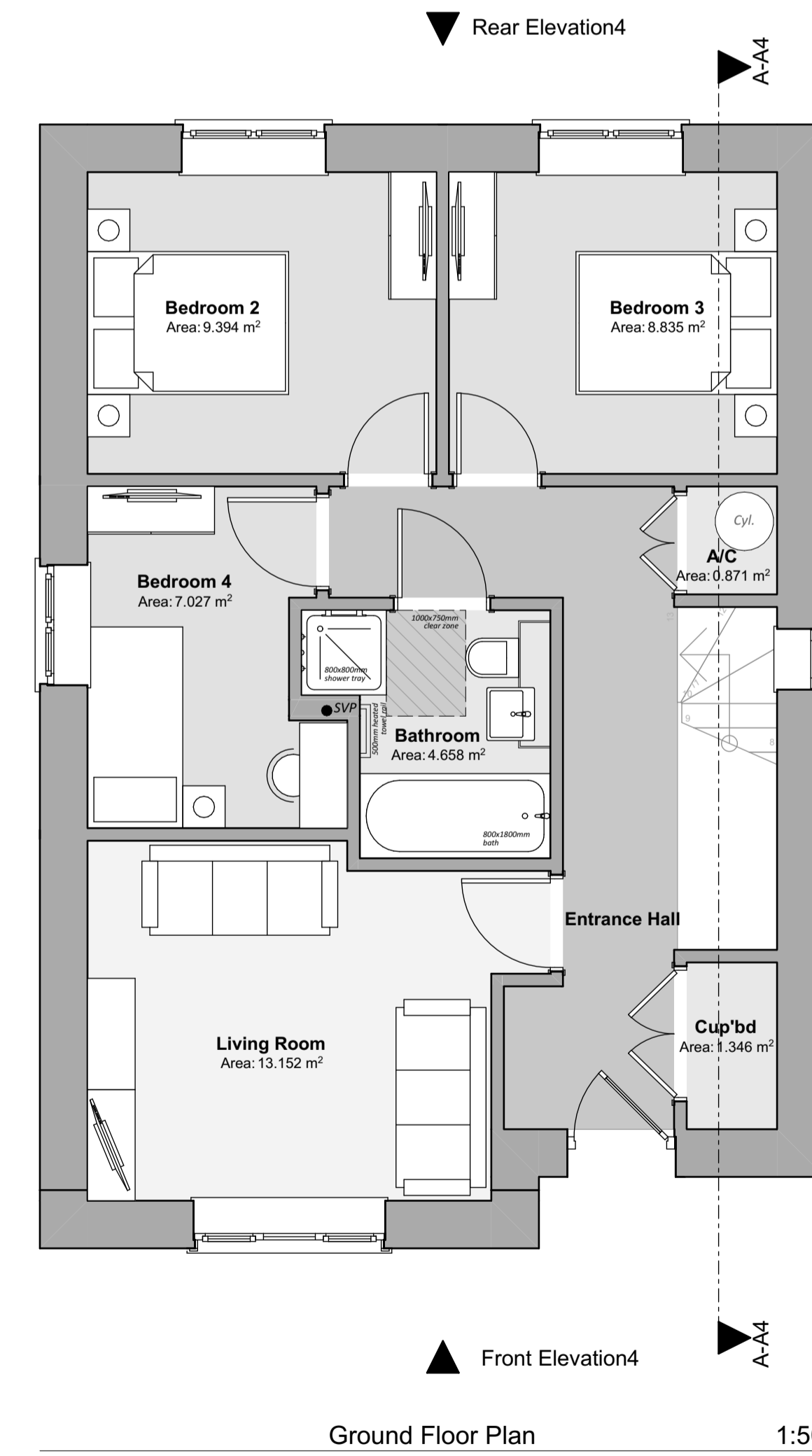


Lower Ground Floor Plan 1:50

Floor Areas:
 Total Gross Internal Ground Floor Area = 61.59m² (662.949sqft)
 Total Gross Internal First Floor Area = 61.59m² (662.949sqft)
 Total Gross Internal Second Floor Area = 32.02m² (353.917sqft)
 Total Gross Internal Area = 123.18m² (1325.898sqft)



Building Section 1:100



Ground Floor Plan 1:50

Revision:	Date:	By:	Notes:



Client: WAKEFIELD DEVELOPMENTS PEMBROKESHIRE LIMITED	Scale: Noted Date: April '23 Drawn: RH/SE	Drawing Title: PLANNING DRAWINGS - 4 Bed Det Split-Level House - Floor Plans, Elevations & Section
Job Title: Proposed Residential Development, Land East of Pilgrims Way, Roch, Pembrokeshire SA62 6BQ		R534 P-19